

Wipers and washers

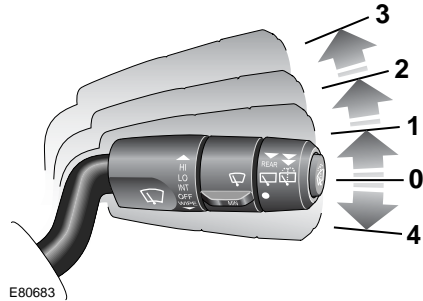
WINDSHIELD WIPERS

CAUTIONS

- ❗ Do not operate the windshield wipers on a dry screen. The drag on the wiper mechanism may cause damage.
- ❗ In freezing, or very hot conditions ensure that the wipers have not stuck to the windshield before operating. The drag on the wiper mechanism may cause damage.
- ❗ Remove any snow, ice, or frost, from the windshield, around the wiper arms and blades, and the screen scuttle before operating the wipers. Snow and ice can cause damage to the wiper mechanism if left uncleared.

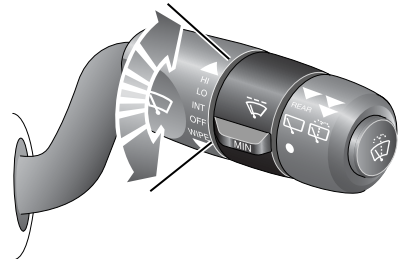
Note: If the wiper blades do become stuck, or jammed, an electronic cut-out may temporarily halt the operation of the wipers. If this happens, switch off the wipers and the ignition. Clear any obstructions, and free the wiper blades before attempting to switch on the ignition.

Wiper operation



1. Rain sensor/intermittent variable delay.
2. Low speed wipe.
3. High speed wipe.
4. Single wipe, pull down and release to operate.

Intermittent variable delay



The interval in between wipes can be adjusted to suit the conditions. Rotate the control upwards to decrease the time between wipes, and down to increase the time between wipes.

Wipers and washers

Speed-dependent mode

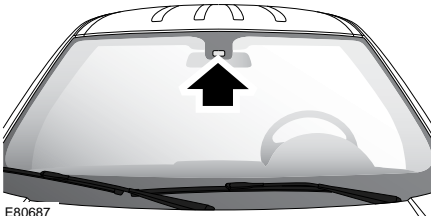
If the vehicle's speed drops below 2 km/h (1.2 mph) with the wipers operating, the wiper frequency automatically reduces. The wipers will switch to the next lowest speed. When the vehicle's speed increases to over 8 km/h (5 mph), the original wiper speed setting is restored automatically.

RAIN SENSOR

CAUTION



Ensure that the wipers are switched off before entering a car wash. If the rain sensitive wipers operate during the car washing process damage may occur to the wiper mechanism.



The rain sensor is able to detect the presence and amount of rain/dirt/snow on the windshield.

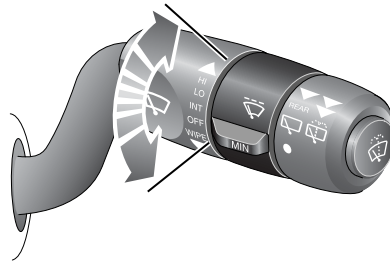
Note: *If water, or other contaminants are present on the windshield when the rain sensitive wipers are activated, it may be necessary to activate the wipers once to provide a starting reference.*

Operation

To use the rain sensitive wipers, move the wiper stalk to position **1** rain sensor/intermittent variable delay.

The wipers will sweep the screen to provide a starting reference. A reference wipe will also be activated when the sensitivity of the rain sensor is increased.

Adjusting the sensitivity



Rotate the control upwards to increase the sensitivity, and down to reduce the sensitivity.

If the sensor detects constant rain the wipers will operate continuously.

Wipers and washers

WINDSHIELD WASHERS

WARNING

Some screenwash products are flammable, do not allow screenwash to come into contact with sources of ignition.

CAUTION

Only screenwash products which are approved for automotive use should be used, and only in accordance with the manufacturers instructions.



E80679

To operate the windshield wash press the button on the end of the wiper stalk. When the button is released, the wipers will complete two sweeps followed by a short pause and an additional sweep, and then park.

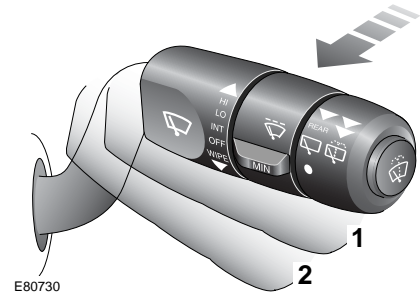
HEADLAMP WASHERS

Headlamp power wash operates automatically with the windshield wash, and will only operate if the headlamps are switched on and there is sufficient washer fluid in the reservoir.

Headlamp wash operates with every fifth operation of the screen washers, or if ten minutes have elapsed since the last operation of the screen washers, they will operate again immediately.

Note: The headlamps are washed alternately to prevent the washer fluid from reducing the light output for both headlamps at the same time.

REAR WINDOW WIPER AND WASHERS



E80730

1. Intermittent wiper operation.
2. Wash wipe.

Wiper

Pull the wiper stalk back to position 1 to turn on the rear screen wiper. The wipe interval is set to six seconds.

Wash/wipe

Pull the wiper stalk to position 2 and hold it there for as long as the wash is required. The wiper will operate at the same time, and carry out two additional wiper sweeps when the lever is released.

Reversing

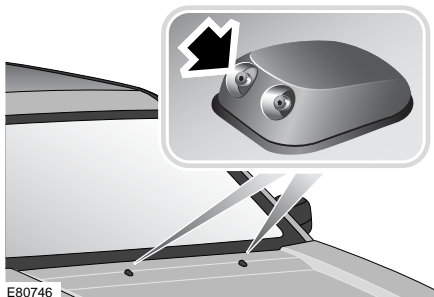
If reverse gear is selected while the front wipers are operating, the rear wiper will begin automatically and continue as long as reverse gear is selected. The wipe interval is set to six seconds.

If the rain sensor is operating the front wipers and reverse gear is selected, the rear wiper will operate automatically.

Wipers and washers

ADJUSTING THE WINDSHIELD WASHER JETS

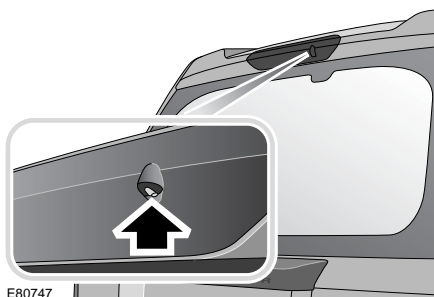
Front



If it is necessary to adjust the direction of the front washer jets, insert the end of a needle into the jet and gently reposition it.

Note: Direct the water jet towards the centre of the windshield. Take into account that when the vehicle is moving at speed the air flow over the hood will lower the jet.

Rear



The rear washer jet is set at the factory, and cannot be adjusted.

Blocked jets

WARNING



Do not operate the washer jets during adjustment. Windshield washer fluid may cause irritation to the eyes and skin. Always read and observe the washer fluid manufacturer's instructions.

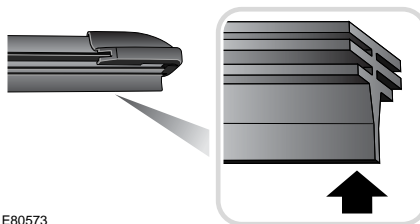
If a washer jet becomes blocked, use a thin strand of wire to unblock the jet by inserting the wire into the jet. Ensure that the wire is completely removed after unblocking.

CHECKING THE WIPER BLADES

WARNING



Only use cleaning products which have been approved for use on automotive glass and rubber. Inappropriate products can cause smearing, and increase glare.



The wiping edge of the blades should be checked, and cleaned periodically. Check the blade rubber for cracks, splits, and roughness. If any damage, wear, or roughness is detected the blade should be replaced immediately to prevent damage to the glass.

Clean the blade edge by wiping with a soft cloth or sponge, using warm soapy water.

Wipers and washers

CHANGING THE WIPER BLADES

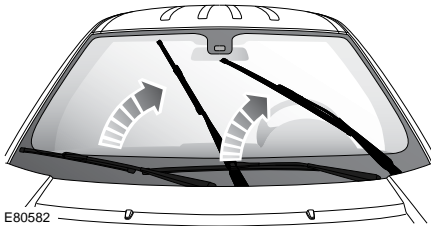
CAUTIONS

- ⚠ When checking or changing the wiper blades, they can be set to the service position, or parked normally.
- ⚠ The wipers will return to their normal parked position when the ignition is turned on. To prevent damage to the mechanism ensure that they are returned to their position against the windshield, and that there are no obstructions, ice, or snow present on the windshield.

Service position

CAUTION

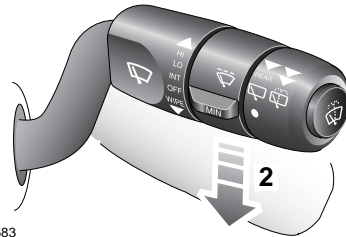
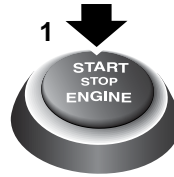
- ⚠ If the wipers are set to the service position and left there during frosty conditions, they may freeze and stick to the windscreen. Do not switch the ignition on until the wipers have been freed from frost/ice. The wipers will try to park when the ignition is switched on. If they are frozen to the screen when this occurs then this may cause damage to the mechanism.



The windshield wiper service position allows the wipers to be parked in a more accessible position. This makes it easier to change wiper blades, or free the wipers from frost/ice.

If the wipers are set to the service position, they can be parked normally by activating a single wipe with the ignition on.

Setting the wipers to the service position



E80583

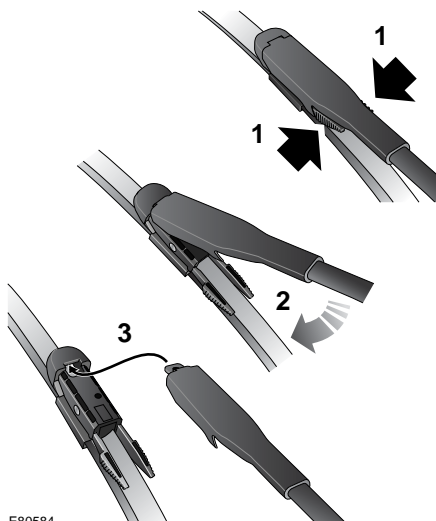
1. Switch off the ignition.
2. Within three seconds of switching off the ignition pull the wiper stalk down to the single wipe position. Hold the stalk in this position briefly, and release it.

Wipers and washers

Changing the front wiper blades

CAUTION

! Only fit the correct length and type of wiper blade. Failure to do so may cause damage to the wiper system, it may also affect the operation of the rain sensor.

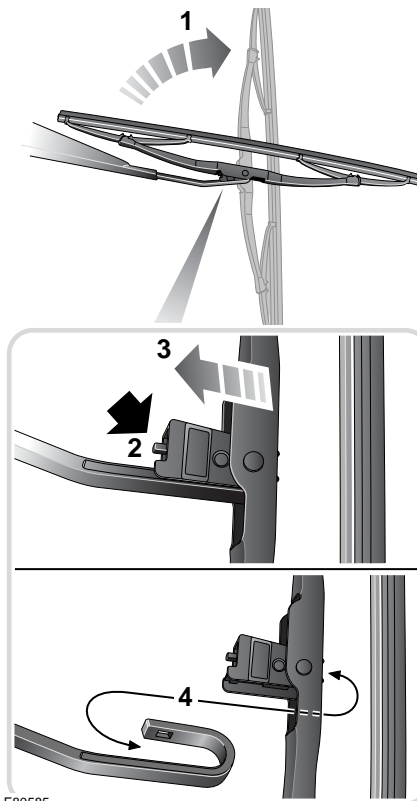


Having set the wipers to the service position, lift the wiper blade clear of the windshield. To remove the wiper blade:-

1. Push the clips together on the underside of the wiper mounting.
2. Rotate the clips and blade away from the wiper mounting.
3. Slide the wiper blade off of the wiper arm.

To fit the new blade, follow the removal procedure in reverse.

Changing the rear wiper blades



Lift the wiper blade clear of the windshield. To remove the wiper blade:-

1. Rotate the wiper blade to gain access to the retaining clip.
2. Press in the retaining clip on the underside of the mounting.
3. Slide blade down the wiper arm and clear of the mounting.
4. Move the blade sideways and lift it clear of the wiper arm.

To fit the new blade, follow the removal procedure in reverse.